



Grab your packsack and some Maps
Jump in the Boat
This is an Adventure

Please Note

- Bring a good navigation map of Red Lake, available at the marinas
- While exploring, watch for mining hazards
- Be respectful of private property
- There is limited docking at the museum. Be prepared to anchor or pull up on shore. Dock hands will be available to pick you up and help.
- There is limited seating at the museum so bring your own chair
- Bring a lunch and snacks

Contact Us

For questions or offers to help.

We can arrange for rides for seniors.

Phone Enid at (807)727-0321

enid@redlaker.ca

www.westredlakemuseum.org

For the best information, look around town for Brian Kreviazuk.

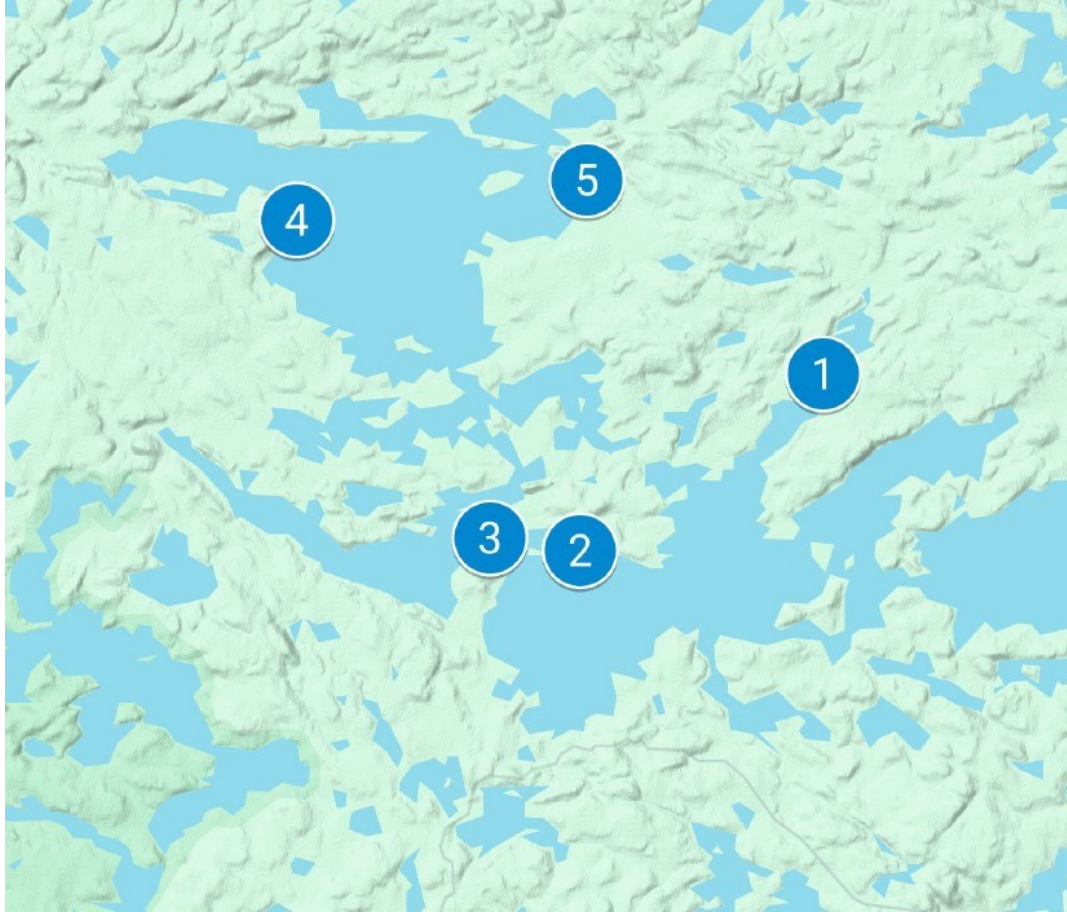


Saturday, August 1, 2026

West End Boat Tour

Volunteers will be at 5 sites

Jump in your boat– It's August Long



Jump in your Boat and Head West

- Experts and maybe musicians will be at the following sites listed here from 12:00 to 4:00 pm on Saturday August 1, 2026.
- Pick up a booklet in town or print it off from our website.
- Enjoy the music from your boat or land, talk to experts and explore the site.



**West Red Lake
Mining Museum**



FRANK PAISHK'S CABIN

This is the main home for the Paishk family and their ancestors for generations. They were here long before the prospectors.

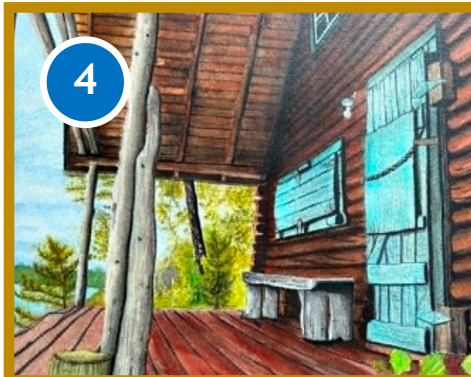
- Find lots of pictures and history of the Paishk family in the cabin
- Sign the guest book
- Speak with the elders and children there to enjoy a gathering.



JOHN Y COLE MINE

Mr. Cole and family came from New York to build a mine. His main building and lots of artifacts remain. Today exploration continues.

- Geologists from Rockland Resources will be there to explain recent work here.
- Maybe some local musicians will hang out and jam on the deck
- Picture by Sara Ramer Dean



Frontier Landing in Scott Bay

100 years of Prospecting right here

- Here is the landing where Gus Dupont and Joe Hodgeson trenched and staked claims which became Frontier Mine, then Mount Jamie and now West Red Lake. 100 years and still exploring
- Check out equipment dumped in the bush from the 1930's. Hike in and check out O'Brien Rivard's mine from the 1970's.

